



# SERVICE BULLETIN

**BULLETIN # 06-04**

**DATE: 6/29/2004**

**SUBJECT: Cockpit Drains on Certain 410 Sport Bridge models**

**HULL #s: All Diesel Installations with Hull Numbers from #31 to #138**

It has recently come to our attention that incorrect thru-hulls were installed on some 410 Sport bridge cockpit drains. The original thru-hull was installed on the transom, very close to the waterline. This thru hull will need to be removed, the hole patched, a new chrome plated bronze thru-hull will need to be added on the starboard hull side. Please follow the provided instructions to complete the change. Photographs and drawings have been included for clarification.

1. The boat will need to be on land and blocked in order to perform service. If the boat is in the water, pull the boat out of the water and securely support it, so that you have access to the transom and hull sides.
2. Inside the lazarette, remove the cockpit drain hose from the transom thru-hull and from the deck fitting. Remove any supports holding the hose to the hull side, and remove the hose from the boat.
3. Remove the thru-hull from the starboard side transom. Patch the existing hole in the transom. (Please See Figure 1 for Clarification)



**Figure 1- Old Thru-Hull Location**

4. Reconfigure the hoses attached to the cockpit drain fittings, so that the drain fitting to thru-hull connection is on the starboard side. This can be accomplished using the existing Tee and Y fittings. (Please see Figure 2 below for clarification)



Figure 2- New Hose and Thru-Hull Configuration

5. Using the supplied drawing as a guide, drill a 2-3/8” hole on the starboard hull side for the new thru hull. This hole is denoted as hole A on the supplied drawing. (Figure 3)

THE COCKPIT DRAIN LOCATION - 2-3-8

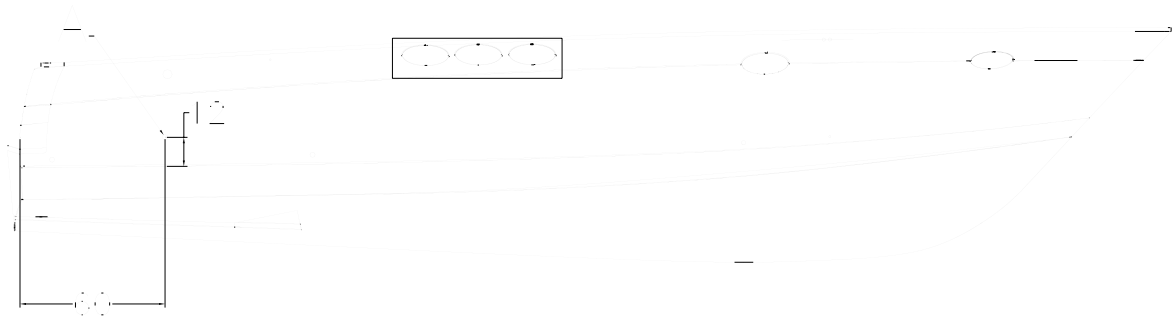


Figure 3-Thru-Hull Location Drawing- Starboard Hull Side

6. Apply urethane caulk to the sealing flange on the supplied 2” chrome thru-hull, and install on the hull side. Wipe off any excess caulk from the hull and thru-hull.
7. Install a new section of 2” hose from the thru-hull to cockpit drain junction fitting.

Estimated time to complete the modification is 1 hour for the thru-hull removal and installation, 2 hours for patching and 2 hours for the haul.